



Republic of the Philippines  
**DEPARTMENT OF FINANCE**  
 Roxas Boulevard Corner Pablo Ocampo, Sr. Street  
 Manila 1004

**BIDS AND AWARDS COMMITTEE**  
**Supplemental Bid Bulletin No. 1**  
 December 5, 2022

**Supply, Delivery, Installation and Commissioning of RFID Reader for Property,  
 Plant and Equipment (PPE) – IB No. 2022-24-G**

This Supplemental Bid Bulletin No. 1 is issued to modify or amend the item in the Bid Documents. This shall form as an integral part of the Bid Documents.

Reference		Amendment/Change/Clarification	
Schedule of Activities		Schedule of Activities	
ACTIVITIES	SCHEDULE	ACTIVITIES	SCHEDULE
Last Day for Issuance of Supplemental Bid Bulletin	<del>December 5, 2022</del>	Last Day for Issuance of Supplemental Bid Bulletin	<u>December 6, 2022</u>
Deadline for Submission of Bids	<del>December 12, 2022, 01:00PM</del>	Deadline for Submission of Bids	<u>December 13, 2022, 01:00PM</u>
Opening of Bids	<del>December 12, 2022, 1:30PM</del>	Opening of Bids	<u>December 13, 2022, 2:00PM</u>
		Note: All statements and formats referring to the schedule of bidding activities found in the bidding documents should be amended/corrected accordingly.	
Page 33-36, Technical Specification		Page 33-36, Technical Specification	
10	<b>Sales Service Agreement:</b> <del>Technical support must be provided on-site 24 hours upon reporting the issues via telephone or email 24/7 including weekends and holidays to resolve technical and other related problems during the warranty period;</del>	10	<b>Sales Service Agreement:</b> <u>Technical support must be provided on-site or remote support such as e-mail, on-line and telephone/mobile phone within 24 hours upon reporting the issues via telephone or email 24/7 including weekends and holidays to resolve technical and other related problems during the warranty period;</u>

12	[New Sub-section]	12	<b>Equipment Layout</b> <b>- Attached is the lay-out per location to</b> <b><u>determine the specific position of the</u></b> <b><u>RFID Reader.</u></b>
----	-------------------	----	---

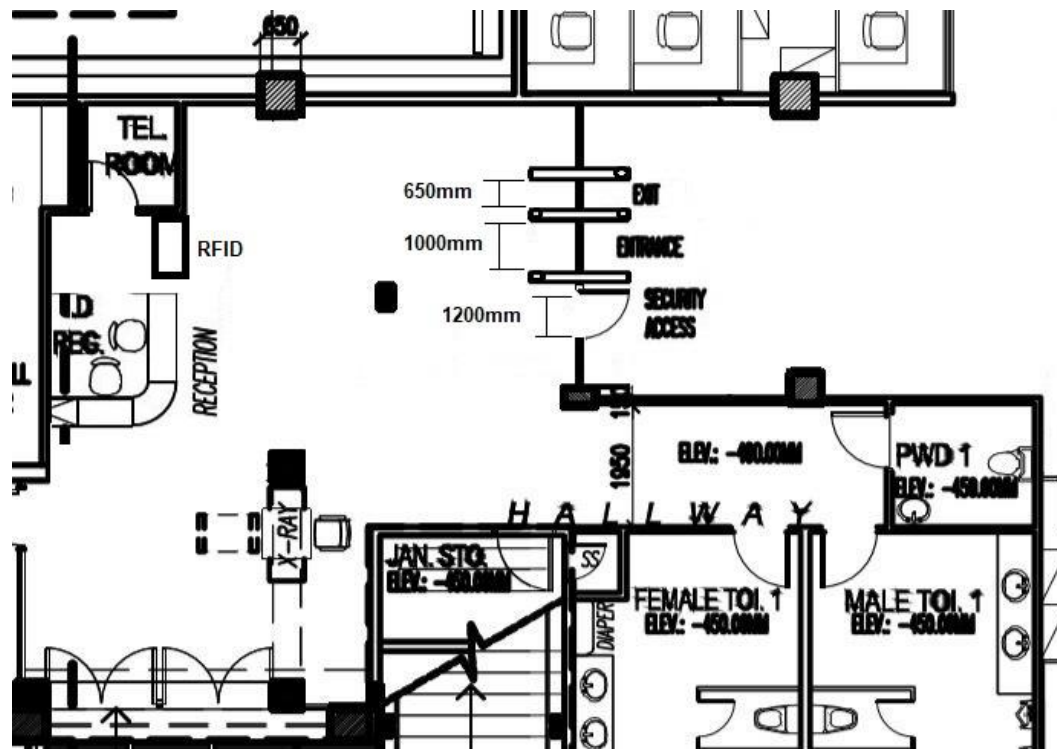
For guidance and information of all concerned.

  
**MARIA EDITA Z. TAN**  
 Undersecretary and  
 DOF BAC Chairperson

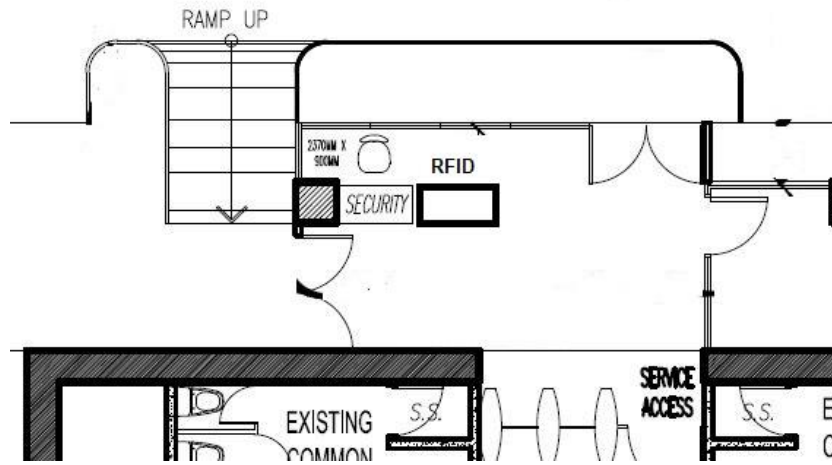
## Equipment Lay-out

Attached is the lay-out per location to determine the specific position of the RFID Reader.

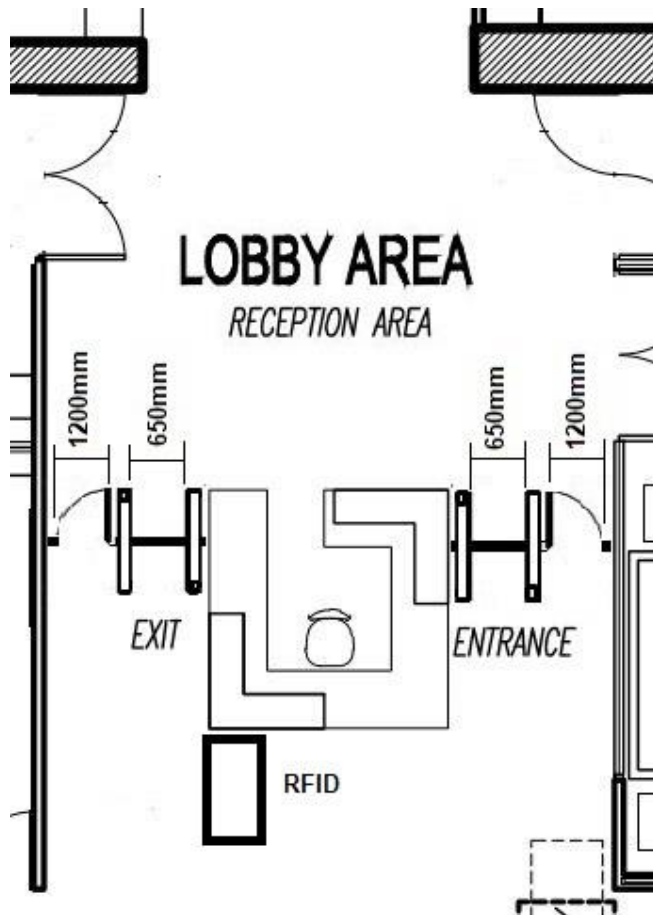
### Ground Floor Main Entrance



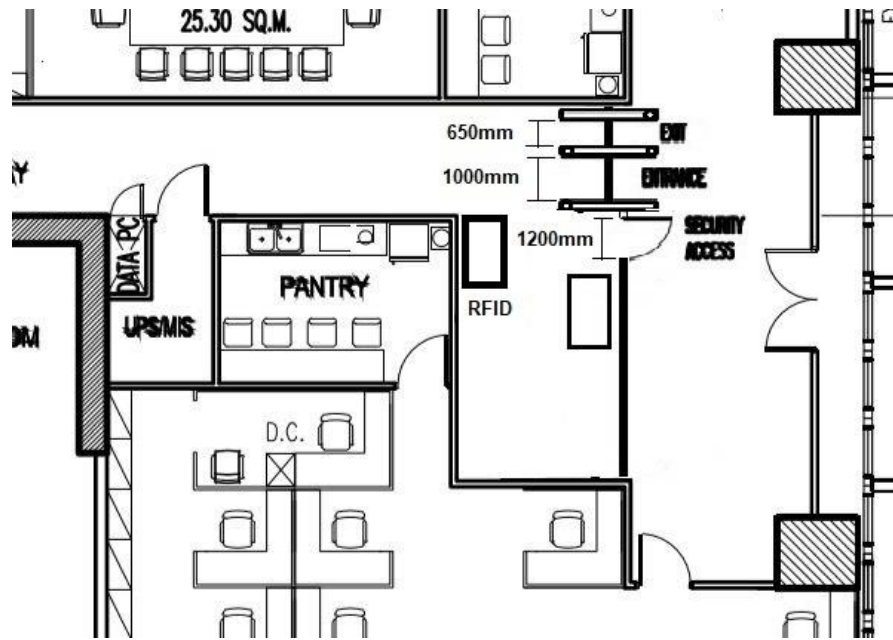
## Basement Entrance



## Podium Level



### Third Floor



### Seventh Floor EDPG

